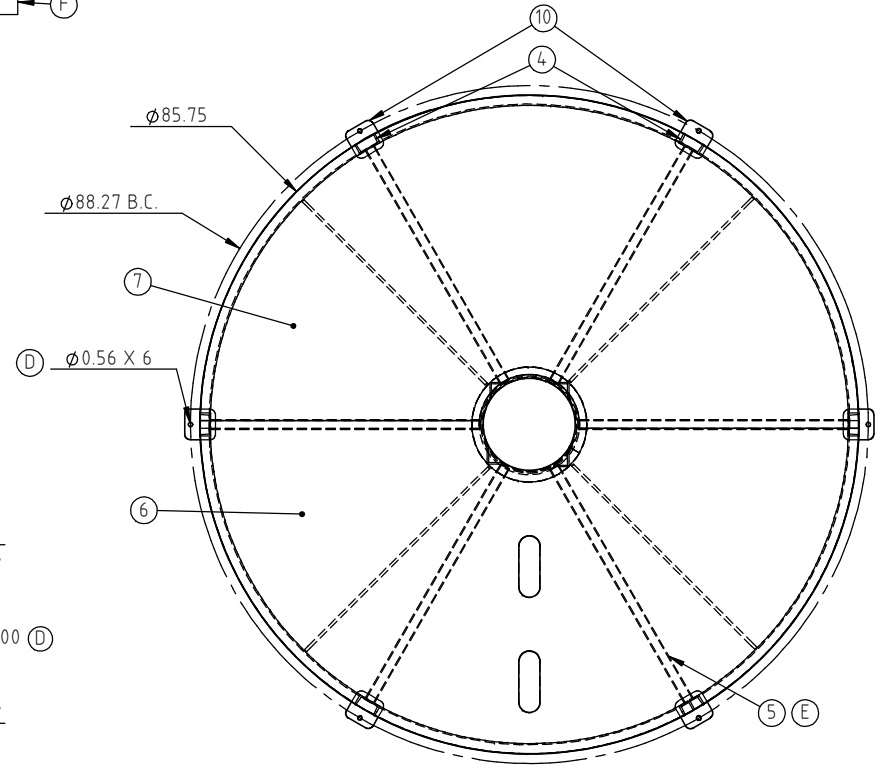
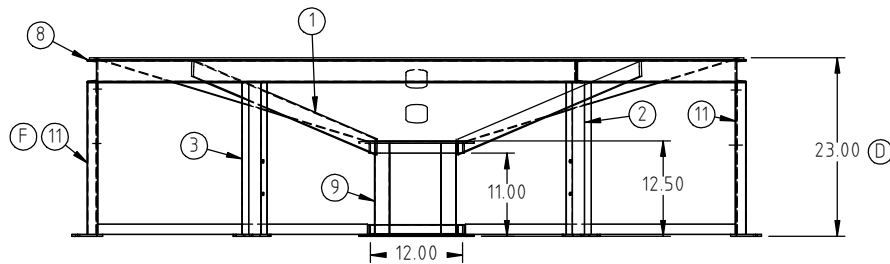


SUPPORT POUR RÉSERVOIR CONIQUE

CB08615ST

F

| KEY | PART NUMBER | DESCRIPTION | QTY. | |
|-----|--------------|--------------------------------|------|---------|
| 1 | CB086-15ST-1 | 3/8" X 2" MILD STEEL FLAT | 4 | (E) |
| 2 | CB086-15ST-2 | 3" MILD STEEL CHANNEL (LEFT) | 1 | |
| 3 | CB086-15ST-3 | 3" MILD STEEL CHANNEL (RIGHT) | 1 | (D) |
| 4 | CB086-15ST-4 | 3" MILD STEEL CHANNEL | 2 | (D) |
| 5 | CB086-15ST-5 | 1" SIZE TUBING | 6 | (E) |
| 6 | CB086-15ST-6 | 14 GA MILD STEEL SHEET (HOLES) | 1 | |
| 7 | CB086-15ST-7 | 14 GA MILD STEEL SHEET | 1 | |
| 8 | CB086-15ST-8 | 3" MILD STEEL CHANNEL | 1 | (D) |
| 9 | 12521 | CB Ø12" RING STAND | 1 | (C) (F) |
| 10 | 12750 | 1/4" X 4" X 4" LEG PAD | 6 | (D) |
| 11 | CB086-15ST-9 | LEG-POWDER COAT | 2 | (F) |



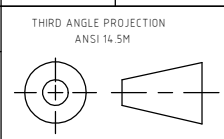
| | | | |
|-----|--|-------------|------|
| F | HOLES FOR POWDER COATING ADDED TO TWO LEGS, PARTS TABLE FORMAT ADJUSTED | ADH 7/22/11 | 2254 |
| E | COMPONENT TABLE UPDATED, TUBE SHORTENED 0.13" | ADH 7/2/10 | 2051 |
| D | MATERIAL P.N. CORRECTED, 12750 WAS SJC85/90ST, 282.00 WAS 280.50, 19.75 WAS 20.00, Ø0.56 WAS Ø0.625, WEIGHT AND FINISH ADDED | ADH 1/26/10 | 1995 |
| C | 12521 WAS SJC85/90ST-2 | ADH 12/7/07 | 1542 |
| B | PN WAS CB085-15ST | NVE 7/31/06 | |
| A | ADDED B.O.M. | NVE 5/17/06 | |
| REV | DESCRIPTION | BY / DATE | CCN |

| | |
|---------------|----------|
| DRAWN / DATE | MATERIAL |
| ADH 6/19/07 | |
| APPRD. / DATE | |
| REH 6/28/07 | |

AGRICO PLASTIQUES
 450-471-2772
 WWW.AGRICOPLASTIQUES.COM

ALL DIMENSIONS ARE IN DECIMAL INCHES
 TOLERANCES UNLESS OTHERWISE SPECIFIED

| | |
|--------------|---|
| POLYETHYLENE | METAL DECIMAL ± .125" FRACTION ± 1/4" ANGLE ± 1° |
| ±1% @ 68°F | |



SHOT WEIGHT:
 SHIPPING WEIGHT:
 360.00 LBS
 FINISH: POWDER COATING, BLACK TILE, 40012

NOTES:

| | | |
|-------------|--------------------------------------|--------------------|
| DESCRIPTION | CONE BOTTOM STAND FOR Ø86" 15° TANKS | |
| SCALE | N.S. | PART NO. CB08615ST |