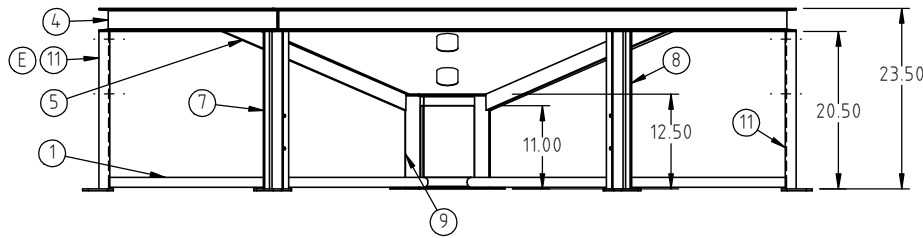
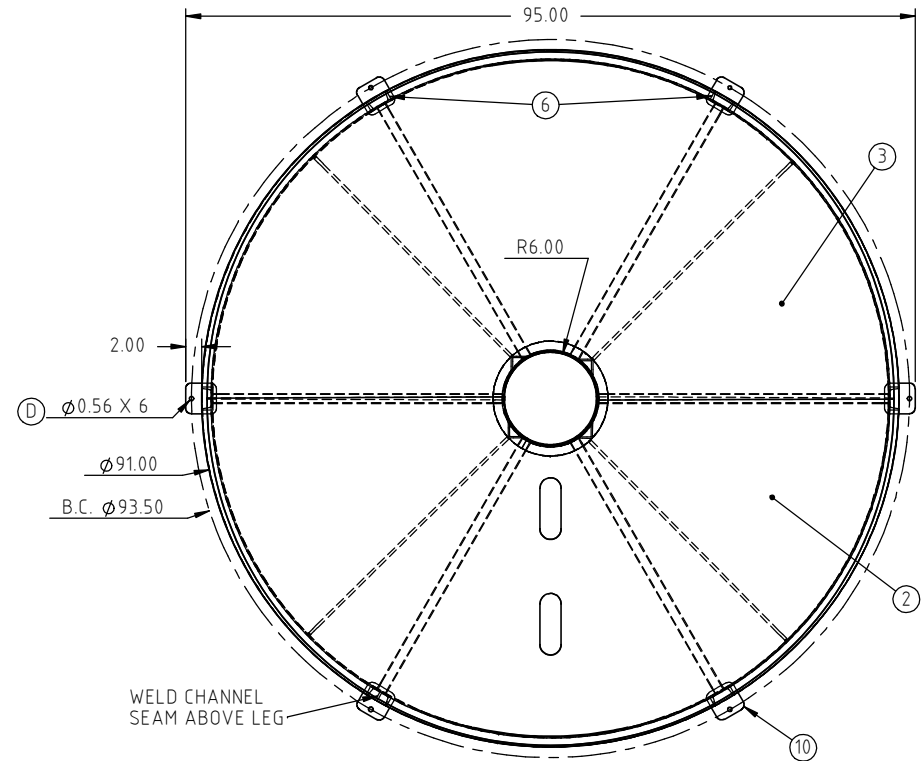


SUPPORT POUR RÉSERVOIR CONIQUE

CB09015ST

E

KEY	PART NUMBER	DESCRIPTION	QTY.	
1	CB090-15ST-1	CENTER TO LEG PIPE	6	E
2	CB090-15ST-2	1/2 CONE (HOLES)	1	
3	CB090-15ST-3	1/2 CONE	1	
4	CB090-15ST-4	CHANNEL RING	1	
5	CB090-15ST-5	CONE SUPPORT STRAP	4	D
6	CB090-15ST-6	CHANNEL LEG	2	
7	CB090-15ST-7	CHANNEL LEG (RIGHT)	1	
8	CB090-15ST-8	CHANNEL LEG (LEFT)	1	C
9	12521	CB Ø12" RING STAND	1	
10	12750	1/4" X 4" X 4" LEG PAD	6	
11	CB090-15ST-9	CHANNEL LEG-POWDER COAT	2	D



E	HOLES FOR POWDER COATING ADDED TO TWO LEGS COMPONENT TABLE UPDATED	ADH 7/22/11	2254
D	MATERIAL P.N. CORRECTED 12750 WAS SJCB86/90ST. ø0.56 WAS ø0.63, WEIGHT AND FINISH ADDED	ADH 1/29/10	1995
C	12521 WAS SJCB85/90ST-2	ADH 12/7/07	1542
B	TOLERANCE WAS 1%@68°F	GWC 3/8/07	
A	ADDED COMPONENT MATERIALS	NVE 4/11/06	
REV	DESCRIPTION	BY / DATE	CCN

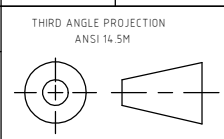
DRAWN / DATE	MATERIAL
ADH 6/29/07	
APPRD. / DATE	
REH 7/18/07	

AGRICO PLASTIQUES
450-471-2772
WWW.AGRICOPLASTIQUES.COM

ALL DIMENSIONS ARE IN DECIMAL INCHES
TOLERANCES UNLESS OTHERWISE SPECIFIED

POLYETHYLENE
±1% @ 68°F

METAL
DECIMAL ± .125"
FRACTION ± 1/4"
ANGLE ± 1°



SHOT WEIGHT:

SHIPPING WEIGHT:
380.00 LBS

FINISH: POWDER COATING,
BLACK TILE, 40012

NOTES:

DESCRIPTION	CONE BOTTOM STAND FOR ø90 15° TANKS	
SCALE	N.S.	PART NO. CB08615ST