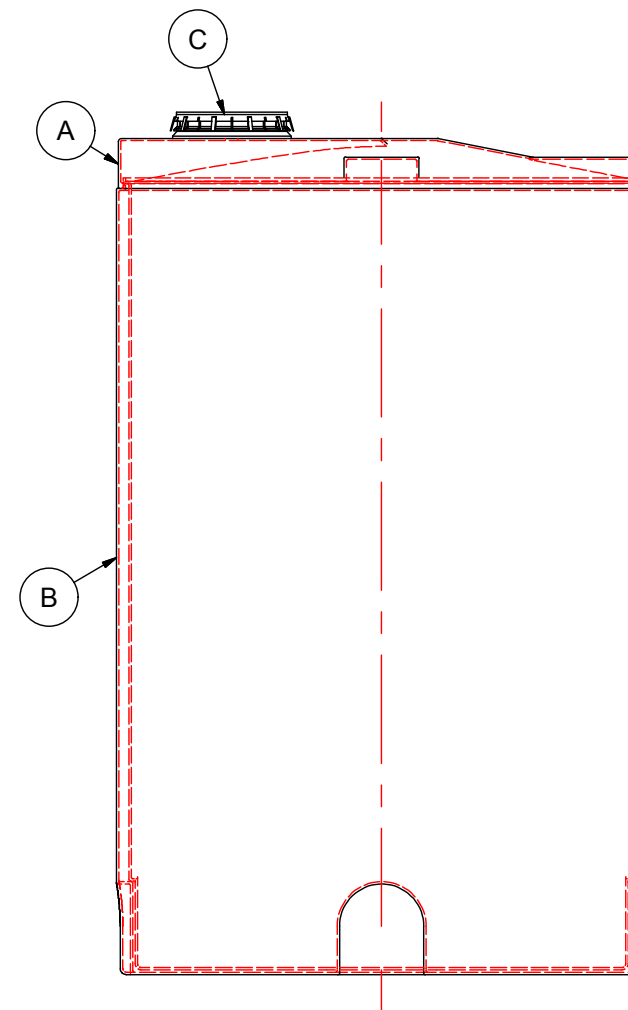
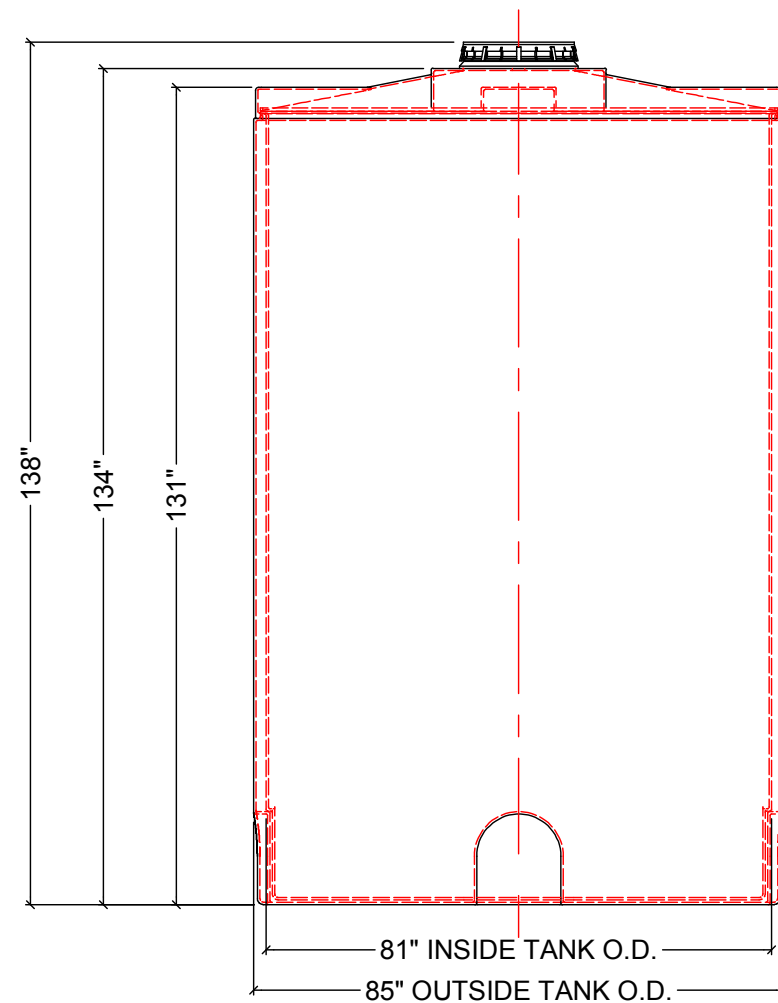
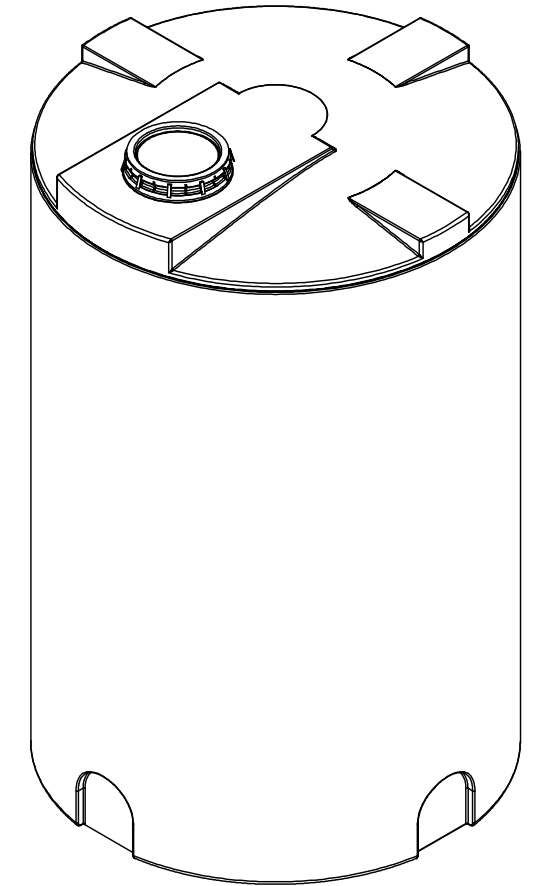


NOTES:

1. TANK IS MANUFACTURED TO ASTM-D-1998 STANDARD.
2. ALL DIMENSIONS ARE APPROXIMATE.
3. ONLY ONE BOTTOM OUTLET FITTING MAY BE INSTALLED.
4. BOTTOM OUTLET FITTING MAY ONLY BE INSTALLED ON A FITTING FLAT LOCATED AT 0°, 90°, 180° OR 270°.

MATERIALS LIST		
ITEMS	DESCRIPTION	NOTES
A	DMT-2200 INSIDE TANK	
B	DMT-2200 OUTSIDE TANK	
C	16" LID WITH LOCKING STRAP	



SIDE VIEW

FRONT VIEW

**Agrico Plastiques**  
450-471-2772

[www.agricoplastiques.com](http://www.agricoplastiques.com)

Réservoir Double Parois DMT2200

Capacité :  
2200 Gallons Impériaux  
2640 Gallons US  
10 000 Litres