



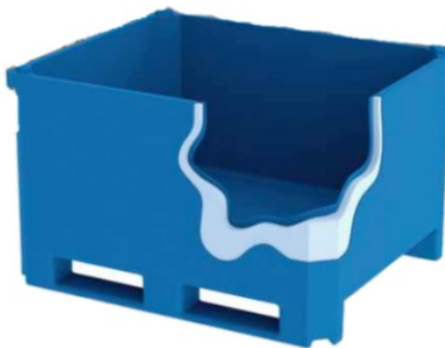
## Pallet Boxes - PE Series

The Most Robust and Hygienic Pallet Boxes on the Market!

- Two polyethylene walls filled with a polyethylene foam
- Dense foam preventing liquids from seeping between walls
- Manufactured in one piece by rotational molding
- Perforated walls remain watertight, due to the dense foam that retains liquids
- Perforation can be repaired by welding
- Molded-in runners base perfectly suited for any applications on rotating forks
- Fabricated with a 2" drain installed
- CFIA approved for food use
- Completely smooth walls and bottom for easy cleaning
- Stackable up to 3 high, with or without cover
- On all models except the PE875, the lid comes with rubber straps to attach it securely on the bin
- Very robust and durable pallet box offering a guaranteed return on investment!

### Triple walls pallet box:

Two polyethylene walls filled with a polyethylene foam



Molded-in runners base



9-leg base for 4-way entry  
with forklift or handtruck



Resistant foot pad protecting  
the base

Tel: (450) 471-2772 • Fax: (450) 951-8700



PE460

Outside Dimensions	Inside Dimensions
41" x 48" x 23"	37" x 45" x 16"
Weight Capacity : 968 lb	
Volume capacity : 442 litres	
Stack Height : Up to 3	
Stack Load : 3872 lb	
Tare Weight : 110 lb	



PE660

Outside Dimensions	Inside Dimensions
41" x 49" x 29"	38" x 46" x 24"
Weight Capacity : 1386 lb	
Volume Capacity : 631 litres	
Stack Height : Up to 3	
Stack Load : 5544 lb	
Tare Weight : 132 lb	



PE875

Outside Dimensions	Inside Dimensions
40" x 48" x 40"	37" x 47" x 32"
Weight Capacity : 1892 lb	
Volume Capacity : 860 litres	
Stack Height : Up to 3	
Stack Load : 5676 lb	
Tare Weight : 171 lb	



PE1050



PE1050P

Outside Dimensions	Inside Dimensions
42" x 48" x 46"	39" x 48" x 46"
Weight Capacity : 2244 lb	
Volume Capacity : 1020 litres	
Stack Height : Up to 3	
Stack Load : 6732 lb	
Tare Weight : 203 lb	

Tel: (450) 471-2772 • Fax: (450) 951-8700

## Options - PE Series

### Cover



PE875 The only model with a standard cover without strap



Cover with rubber straps maintaining firmly the cover in place

### Without drain



For specific needs, the pallet box can be molded without drain



The drain cap screwed directly to the bin to avoid losing it

### Colors



Many colors are available to delimit working areas in industrial and food-processing industries

**Very robust and durable pallet boxes offering a guaranteed return on investment!**

Toutes les dimensions et spécifications sont approximatives et peuvent varier légèrement.

Les capacités de charge indiquées sont basées sur un poids de charge distribué également et sur une capacité de charge ( $\text{pi}^3$ ) interne disponible

Tel: (450) 471-2772 • Fax: (450) 951-8700